

MULTI-FUEL SILO DESIGN WITH HYDRAULIC ROOF, 1 HEATING CIRCUIT, COMPLETE REGULATION AND REMOTE ICLOUD
VISUALIZATION, FULLY MONITORED AND REGULATED CHICKEN FARM
CARNOUSTIE, SCOTLAND





SMART HEATING TECHNOLOGY

SMART HEATING TECHNOLOGY

SMART REFERENCE LIST | SMART CABIN 500 KW

MULTI-FUEL SILO DESIGN WITH HYDRAULIC ROOF, 1 HEATING CIRCUIT, COMPLETE REGULATION AND REMOTE ICLOUD VISUALIZATION, FULLY MONITORED AND REGULATED CHICKEN FARM CARNOUSTIE, SCOTLAND





SMART HEATING TECHNOLOGY

SMART HEATING TECHNOLOGY

SMART REFERENCE LIST | SMART CABIN 500 KW

MULTI-FUEL SILO DESIGN WITH HYDRAULIC ROOF, 1 HEATING CIRCUIT, COMPLETE REGULATION AND REMOTE ICLOUD
VISUALIZATION, FULLY MONITORED AND REGULATED CHICKEN FARM
CARNOUSTIE, SCOTLAND





SMART HEATING TECHNOLOGY

SMART HEATING TECHNOLOGY

SMART REFERENCE LIST | SMART CABIN 500 KW

MULTI-FUEL SILO DESIGN WITH HYDRAULIC ROOF, 1 HEATING CIRCUIT, COMPLETE REGULATION AND REMOTE ICLOUD VISUALIZATION, FULLY MONITORED AND REGULATED CHICKEN FARM CARNOUSTIE, SCOTLAND



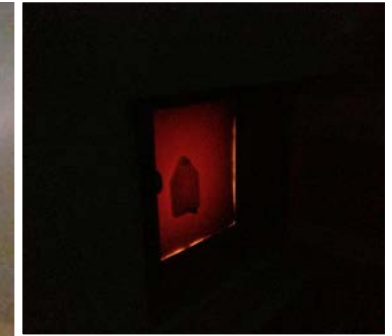


SMART HEATING TECHNOLOGY

SMART HEATING TECHNOLOGY

SMART REFERENCE LIST | SMART CABIN 500 KW

MULTI-FUEL SILO DESIGN WITH HYDRAULIC ROOF, 1 HEATING CIRCUIT, COMPLETE REGULATION AND REMOTE ICloud VISUALIZATION, FULLY MONITORED AND REGULATED CHICKEN FARM CARNOUSTIE, SCOTLAND



Flue Gas Analysis	Flue Gas Analysis
Customer: <i>CHICKEN FARM</i>	Customer: <i>CHICKEN FARM</i>
Appliance: <i>SMART HEATING TECHNOLOGY</i>	Appliance: <i>SMART HEATING TECHNOLOGY</i>
Press: Working/Operating	Press: Working/Operating
Ref: <i>200</i>	Ref: <i>200</i>
Date: 12-08-16-Sep-2013	Date: 11-55-16-Sep-2013
Fuel: Wood pellet dry	Fuel: Wood pellet dry
CO (%) 8.5	CO (%) 8.6
CO (ppm) 61	CO (ppm) 61
CO2 (%) 12.1	CO2 (%) 12.9
Ratio 0.0005	Ratio 0.0005
Pressure (mBar) 0.08	Pressure (mBar) 0.08
Temp set (C) 132	Temp set (C) 129
Temp flow (C) 156	Temp flow (C) 159
Eff set (%) 83.1	Eff set (%) 83.2
KS air (%) 68.2	KS air (%) 70.6
Accepted by: <i>CO-9804/13</i>	Accepted by: <i>CO-9804/13</i>
CO-9804/13	CO-9804/13

