

SMART MOBILE CONTAINER SOLUTION PROMOTIONAL CUT-OUT

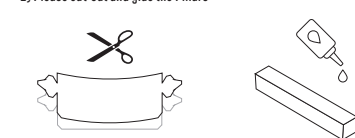
ASSEMBLY INSTRUCTIONS:

1) First, scorch the paper following the arrows

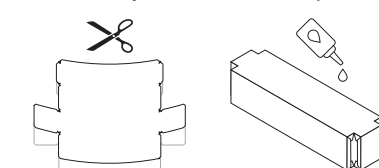
Please pay attention to the shape of the Roof and Floor!



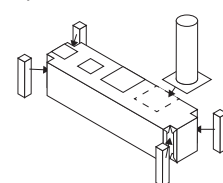
2) Please cut-out and glue the Pillars



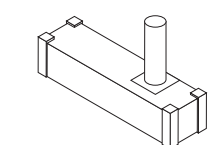
3) Please cut-out and glue the Smart Mobile Container Body



4) Please insert the Pillars in the corners and glue the Chimney to the Roof



5) Smart Mobile Container is now FINISHED!



KEY:

- Marking of the Bends
- Bending
- Mark for Cutting

Attention, the Floor ONLY BENDS HERE!

Attention, the Floor ONLY BENDS HERE!

Attention, the Roof ONLY BENDS HERE!

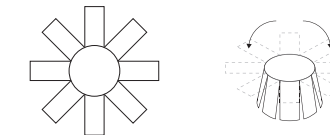
Attention, the Roof ONLY BENDS HERE!

Attention, the Floor ONLY BENDS HERE!

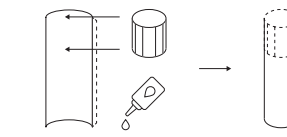
CHIMNEY ASSEMBLY INSTRUCTIONS:

1) Please cut-out the individual parts of the Chimney

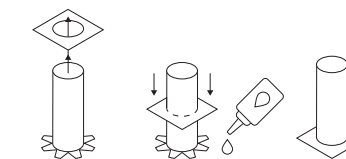
2) Please prepare the inner part of the Chimney



3) Please insert the Inner part of the Chimney into the Upper Section



4) Please put the Chimney over its Base and glue into place

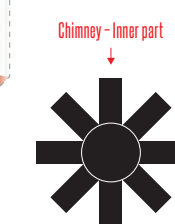


Attention, the Roof ONLY BENDS HERE!

Attention, the Roof ONLY BENDS HERE!



Chimney - Base



Chimney - Inner part



Chimney

