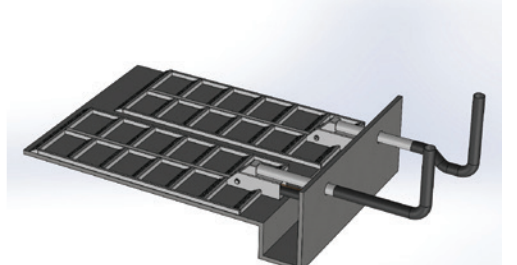
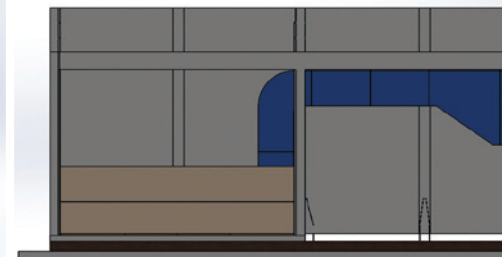
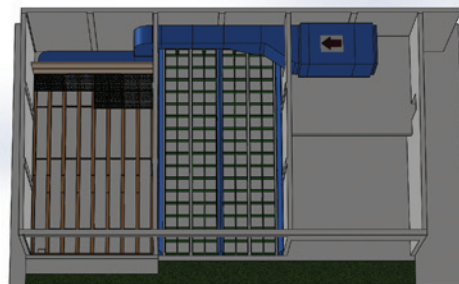
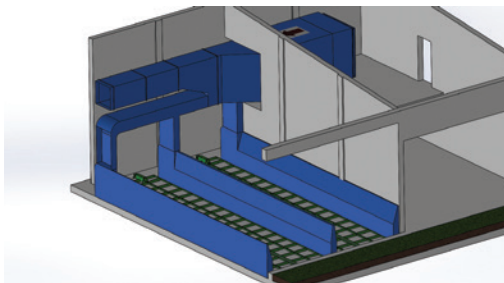
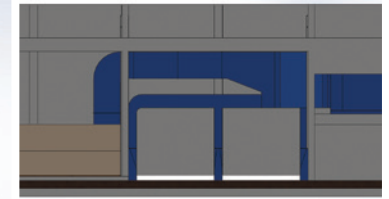
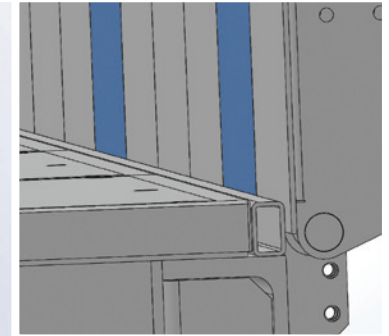
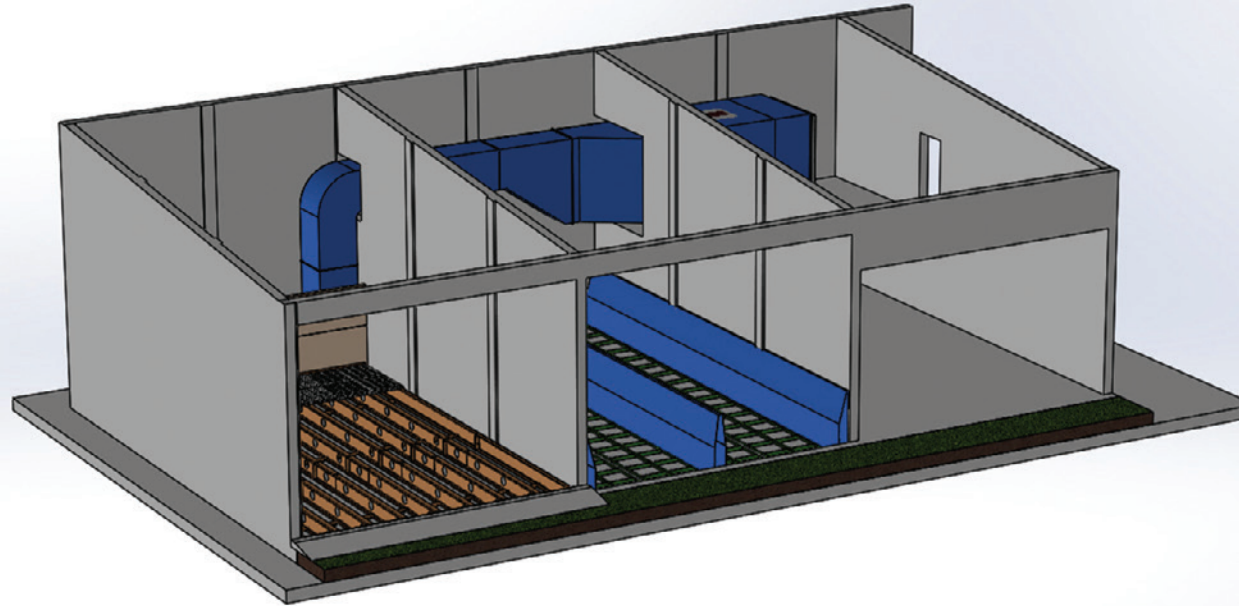
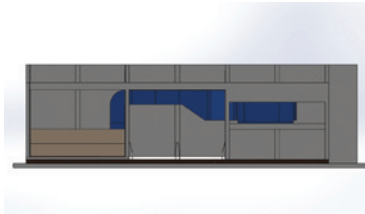
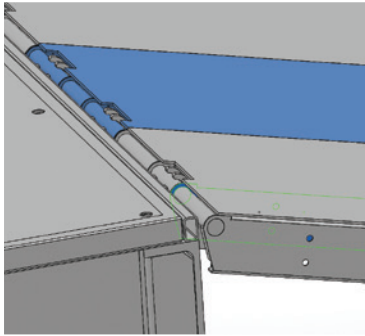




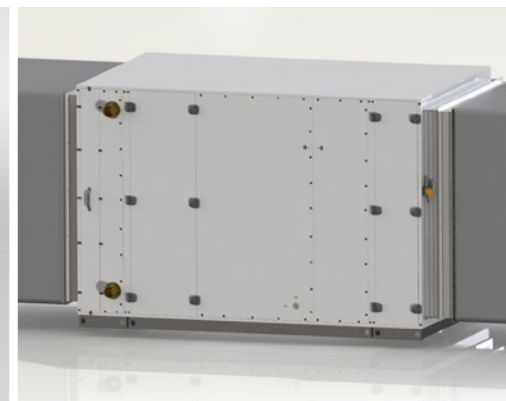
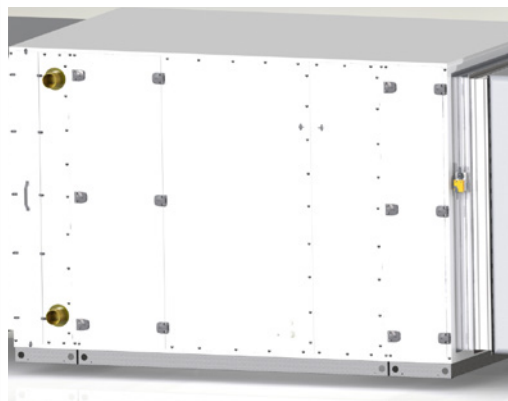
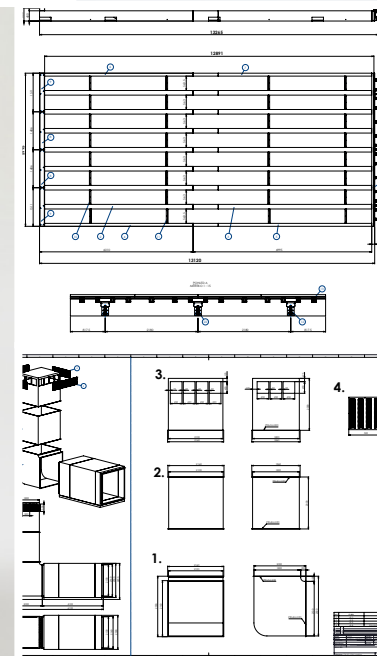
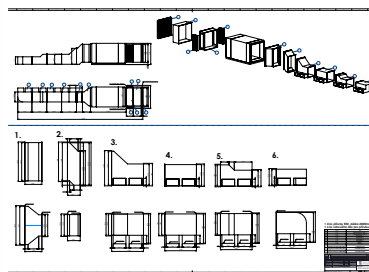
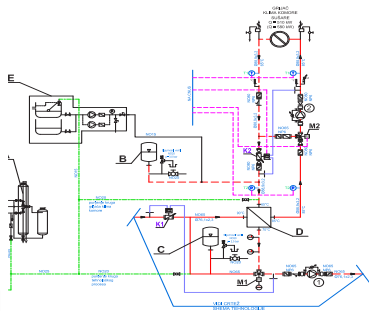
### SMART REFERENCE LIST | SMART WOOD CHIPS DRYER 560 KW

SMART HOT-WATER – HOT-AIR AIR HANDLING UNIT 560 KW, AIR FLOW 32 000 M<sup>3</sup>/H, AIR TEMPERATURE WORKING RANGE 30/81,4°C, WATER FLOW 26,01 M<sup>3</sup>/H, WATER TEMPERATURE WORKING RANGE 85/65°C, ETHYLENE-GLYCOL MIXTURE 30%, 13 120 MM X 5 995 MM GALVANIZED STEEL STRUCTURE, 10 TONS / M<sup>2</sup> WEIGHT CAPACITY, SPECIAL PERFORATED PLATES, CORNER PLATES, WALL PROTECTION BARRIERS, MOISTURE-EXHAUSTING WALL FANS, FIRE-PROOF FLAPS, TEMPERATURE SENSORS, MOISTURE SENSORS, REMOTE ICLOUD MONITORING  
VIROVITICA, CROATIA



### SMART REFERENCE LIST | SMART WOOD CHIPS DRYER 560 KW

SMART HOT-WATER – HOT-AIR AIR HANDLING UNIT 560 KW, AIR FLOW 32 000 M<sup>3</sup>/H, AIR TEMPERATURE WORKING RANGE 30/81,4°C, WATER FLOW 26,01 M<sup>3</sup>/H, WATER TEMPERATURE WORKING RANGE 85/65°C, ETHYLENE-GLYCOL MIXTURE 30%, 13 120 MM X 5 995 MM GALVANIZED STEEL STRUCTURE, 10 TONS / M<sup>2</sup> WEIGHT CAPACITY, SPECIAL PERFORATED PLATES, CORNER PLATES, WALL PROTECTION BARRIERS, MOISTURE-EXHAUSTING WALL FANS, FIRE-PROOF FLAPS, TEMPERATURE SENSORS, MOISTURE SENSORS, REMOTE ICloud MONITORING VIROVITICA, CROATIA







# SMART HEATING TECHNOLOGY

SMART HEATING TECHNOLOGY

## SMART REFERENCE LIST | SMART WOOD CHIPS DRYER 560 KW

SMART HOT-WATER – HOT-AIR AIR HANDLING UNIT 560 KW, AIR FLOW 32 000 M<sup>3</sup>/H, AIR TEMPERATURE WORKING RANGE 30/81,4°C, WATER FLOW 26,01 M<sup>3</sup>/H, WATER TEMPERATURE WORKING RANGE 85/65°C, ETHYLENE-GLYCOL MIXTURE 30%, 13 120 MM X 5 995 MM GALVANIZED STEEL STRUCTURE, 10 TONS / M<sup>2</sup> WEIGHT CAPACITY, SPECIAL PERFORATED PLATES, CORNER PLATES, WALL PROTECTION BARRIERS, MOISTURE-EXHAUSTING WALL FANS, FIRE-PROOF FLAPS, TEMPERATURE SENSORS, MOISTURE SENSORS, REMOTE ICloud MONITORING VIROVITICA, CROATIA



SMART HEATING  
TECHNOLOGY

SMART HEATING TECHNOLOGY s.r.o., U Statku 653/24, 717 00 Ostrava-Bartovice, Czech Republic, [www.SmartHeating.cz](http://www.SmartHeating.cz)



### SMART REFERENCE LIST | SMART WOOD CHIPS DRYER 560 KW

SMART HOT-WATER – HOT-AIR AIR HANDLING UNIT 560 KW, AIR FLOW 32 000 M<sup>3</sup>/H, AIR TEMPERATURE WORKING RANGE 30/81,4°C, WATER FLOW 26,01 M<sup>3</sup>/H, WATER TEMPERATURE WORKING RANGE 85/65°C, ETHYLENE-GLYCOL MIXTURE 30%, 13 120 MM X 5 995 MM GALVANIZED STEEL STRUCTURE, 10 TONS / M<sup>2</sup> WEIGHT CAPACITY, SPECIAL PERFORATED PLATES, CORNER PLATES, WALL PROTECTION BARRIERS, MOISTURE-EXHAUSTING WALL FANS, FIRE-PROOF FLAPS, TEMPERATURE SENSORS, MOISTURE SENSORS, REMOTE ICloud MONITORING VIROVITICA, CROATIA







# SMART HEATING TECHNOLOGY

SMART HEATING TECHNOLOGY

## SMART REFERENCE LIST | SMART WOOD CHIPS DRYER 560 KW

SMART HOT-WATER – HOT-AIR AIR HANDLING UNIT 560 KW, AIR FLOW 32 000 M<sup>3</sup>/H, AIR TEMPERATURE WORKING RANGE 30/81,4°C, WATER FLOW 26,01 M<sup>3</sup>/H, WATER TEMPERATURE WORKING RANGE 85/65°C, ETHYLENE-GLYCOL MIXTURE 30%, 13 120 MM X 5 995 MM GALVANIZED STEEL STRUCTURE, 10 TONS / M<sup>2</sup> WEIGHT CAPACITY, SPECIAL PERFORATED PLATES, CORNER PLATES, WALL PROTECTION BARRIERS, MOISTURE-EXHAUSTING WALL FANS, FIRE-PROOF FLAPS, TEMPERATURE SENSORS, MOISTURE SENSORS, REMOTE ICloud MONITORING  
VIROVITICA, CROATIA





## SMART REFERENCE LIST | SMART WOOD CHIPS DRYER 560 KW

SMART HOT-WATER – HOT-AIR AIR HANDLING UNIT 560 KW, AIR FLOW 32 000 M<sup>3</sup>/H, AIR TEMPERATURE WORKING RANGE 30/81,4°C, WATER FLOW 26,01 M<sup>3</sup>/H, WATER TEMPERATURE WORKING RANGE 85/65°C, ETHYLENE-GLYCOL MIXTURE 30%, 13 120 MM X 5 995 MM GALVANIZED STEEL STRUCTURE, 10 TONS / M<sup>2</sup> WEIGHT CAPACITY, SPECIAL PERFORATED PLATES, CORNER PLATES, WALL PROTECTION BARRIERS, MOISTURE-EXHAUSTING WALL FANS, FIRE-PROOF FLAPS, TEMPERATURE SENSORS, MOISTURE SENSORS, REMOTE ICloud MONITORING VIROVITICA, CROATIA

